



**The Bergmann
underground lineup.**
You can rely on these guys.



Made in Germany.

BERGMANN

Bergmann C804e

The agile machine.

The electric Bergmann C804e is at home wherever things get tight and complex, and not just because of its compact dimensions: The unique vehicle concept with four-wheel steering, low entry point, and swivel and support seating provides ergonomic comfort and maximum safety on construction sites above and below ground.

➤ The strongest in its class

The C804e's highlight is its payload of up to 3.5 tonnes. This makes it the largest battery-powered electric wheeled dumper in the world today. The emission-free and low-noise electric drive pays off time and again, especially in tunnels, and helps simplify ventilation plans.

➤ Staying power for big tasks

The C804e's innovative powertrain and battery management system were developed by Bergmann. The built-in lithium-iron phosphate (LFP) batteries are low-maintenance and still powerful even after 10,000 charging cycles. In addition, the LFP modules are non-flammable and protected by a robust steel construction for heavy-duty use.

➤ Flexible carrying

Equipped with either a round tipping dump body or a three-sided tipping flatbed, the C804e is suitable for transporting both general and bulk loads. The flexible rear frame also makes it possible to transport overlong equipment and materials. The front mounting bracket, a quick-change system at the rear, and a 230 V outlet with 300 W power output all make the C804e a perfect supply and service vehicle.

100 %
emission free



Bergmann C804e



Electric wheeled dumper | Cab

Flatbed or tipping dump body

* Unless otherwise indicated, the values given refer to the vehicle version with flatbed.

Payload (techn.)*	3,000 – 3,500 kg	6,600 lb
Load capacity (dump body)	1.47 m³	1.92 yd³
Load capacity (flatbed)	1.24 m³	1.62 yd³
Total length	3,967 mm	13.01 ft
Total width	1,500 mm	4.92 ft
Clearance height without beacon light	2,024 mm	6.64 ft
Ground clearance	238 mm	0.78 ft
Dump height (rear)	534 mm	1.75 ft
Loading height	1,302 mm	4.27 ft
Engine power	25 kW	33.51 hp
Weight empty	from 2,550 kg	5,620 lb

Bergmann C815s

See and be seen.

With its sophisticated features, the Bergmann C815s wheeled dumper is ideal for use underground. Its driving comfort and driver safety are as impressive as its high-performance technology.

➤ Comfortable yet hard working

The Bergmann C815s' spacious, air-conditioned cab and suspension front axle help ensure that the driver has a pleasant workplace for heavy-duty tunnel work. Equipped with a swivelling driver's console, the dumper can work quickly and safely both going forwards and in reverse.

➤ Bringing light into the darkness

With its rear-view camera and strong peripheral lighting, the Bergmann C815s is a winner in tunnels. It is equipped with six LED floodlights on both the front and rear. They provide excellent coverage even in dusty conditions.

➤ Tunnel dump body for the best visibility

The robust rear tipping dump body is specially designed for use in tunnels. It does not obstruct the driver's field of vision when reversing, and so guarantees an optimal view of the route.

Now with
**tunnel dump
body!**



Suitable for transport by crane

All the dumpers listed can be lowered into shafts by crane.
Contact us for details!

Bergmann C815s



Wheel dumper | Cab

Rear tipping dump body

Payload	12,000 kg	26,455 lb
Load capacity level	5.0 m ³	6.5 yd ³
Load capacity heaped	8.0 m ³	10.5 yd ³
Total length	6,834 mm	22.42 ft
Total width	2,505 mm	8.22 ft
Clearance height without beacon light	3,028 mm	9.93 ft
Ground clearance	429 mm	1.41 ft
Dump height	923 mm	3.03 ft
Loading height (front)	2,110 mm	6.92 ft
Engine power	119 kW	159.58 hp
Weight empty	9,080 kg	20,017 lb

Bergmann C828s

A real workhorse.

The design? No nonsense. Pared back to the essentials: getting the work done. The robust Bergmann C828s is a real workhorse. And a comfortable workplace with suspension on the front axle and Bergmann's comfort cab.

➤ Safe and powerful transporting of loads

With a net weight of just 19.25 tonnes, this articulated 2-axle vehicle can move 25 tonnes at a speed of 40 km/h (24.85 mph). Even in reverse, the C828s can reach speeds of 35 km/h (21.75 mph).

➤ Safe work place with swivelling seat

The cab's extensive windows and the short front hood provide an optimum view of the working environment. The swivelling seat means there's no need to turn the vehicle around in narrow tunnels. Not only is this safer, it's also more efficient.

➤ A cost-effective powerhouse

High-performance yet value for money. The 2-axle concept reduces owning and operating costs and turns the articulated 6.7 litre diesel vehicle into an economic powerhouse.



Bergmann C828s



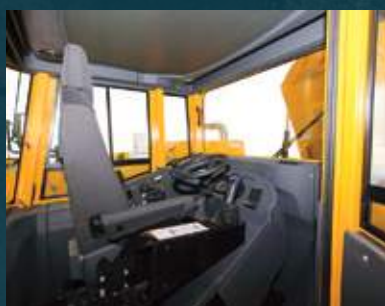
Wheel dumper | Cab

Rear tipping dump body

Payload	25,000 kg	55,116 lb
Load capacity heaped	15.0 m ³	19.6 yd ³
Total length	9,316 mm	30.56 ft
Total width	2,870 mm	9.42 ft
Clearance height without beacon light	3,353 mm	11.00 ft
Ground clearance	480 mm	1.57 ft
Dump height	700 mm	2.30 ft
Loading height	2,719 mm	8.92 ft
Engine power	186 kW	252.89 hp
Weight empty	19,250 kg	42,439 lb

Focus on:
Occupational health
and safety.

Tunnels are demanding. As well as needing high transport performance in confined spaces, they also require the highest in operational safety and the best in occupational health and safety.



Swivel seat for the best overview and transport performance.



Rear flashing lights supplement the audible warning signals for the safety of those inside and outside the cab.



Extinguishing system and diesel particulate filter in accordance with tunnel construction requirements.



Safe ascent and descent outside of the danger zones and within the driver's field of vision.



Carrier vehicles are prepared ex works depending on our customers' individual transport needs.



Protective ventilation systems for workplace protection in dusty environments.

Built for tunnels:



C804e

Electric wheeled dumper | Cab
Flatbed or tipping dump body



C815s

Wheel dumper | Cab
Rear tipping dump body



C828s

Wheel dumper | Cab
Rear tipping dump body

Built for tunnels.



C804e

100 %
emission free



C815s



C828s



Bergmann. Built for you.



Made in Germany.

Bergmann Maschinenbau GmbH & Co. KG
Essener Straße 7 | 49716 Meppen | Germany
T +49 (0) 5932 7292-0 | info@bergmann-mb.de
www.bergmann-dumper.de

BERGMANN